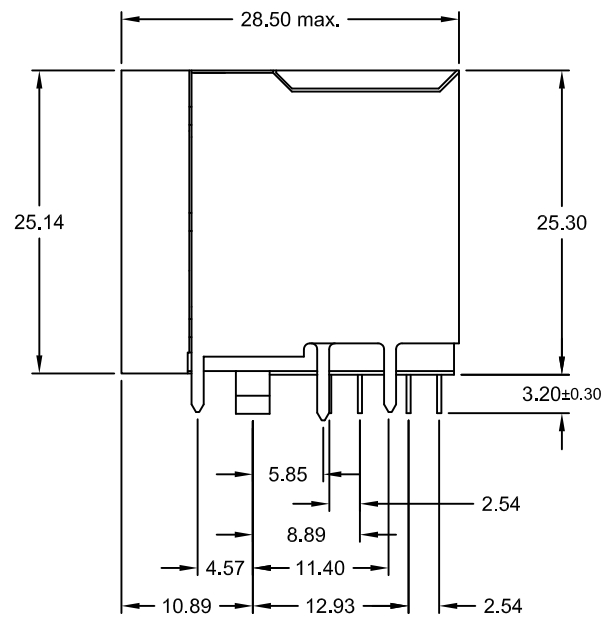
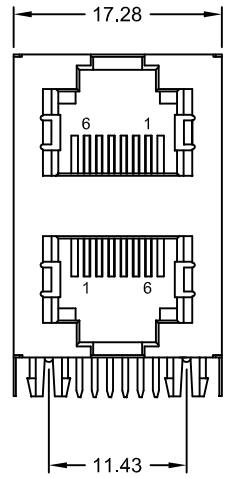


REV.	DESCRIPTION	DATE	DRAWN
A	NEW	29.04.2014	Ronny



### Specifications Electrical

Current rating: 1.5A  
 Insulation resistance: 1000MΩ min. @500V DC  
 Voltage rating: 125V AC rms  
 Withstanding voltage: 1000V AC rms 60Hz, 1 Minute  
 Contact resistance: 50mΩ max.

### Mechanical Requirements

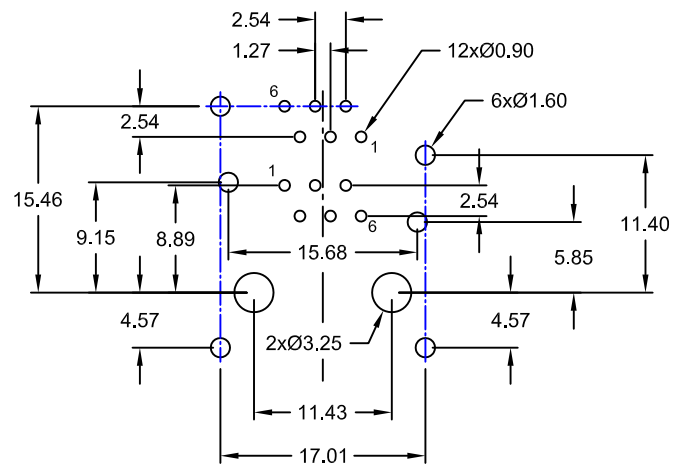
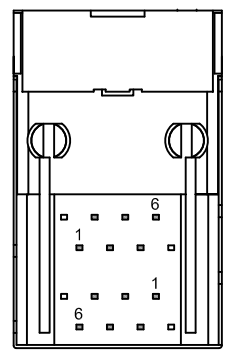
Operating Life: 750 Cycles min.

### Material

Contact: Phosphor Bronze t=0.35mm  
 Plating: Sn over Ni on solder area;  
 Au over Ni on contact area  
 Insulator: PBT Polyester UL 94V-0 (Black)  
 Shield: stainless steel t=0.20mm

Storage temperature: -40°C to +85°C  
 Operating temperature: 0°C to +70°C

Cavity conforms to FCC Rules and Registration PAR68, Subparts F



Recommended PCB Layout  
(Top View)

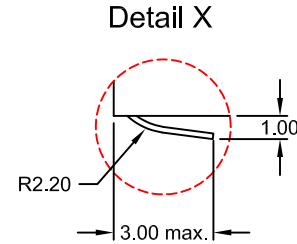
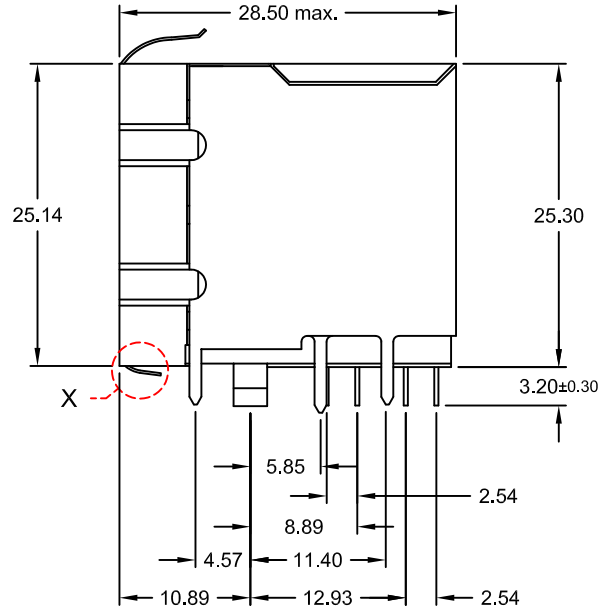
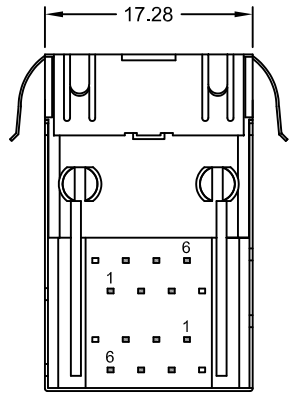
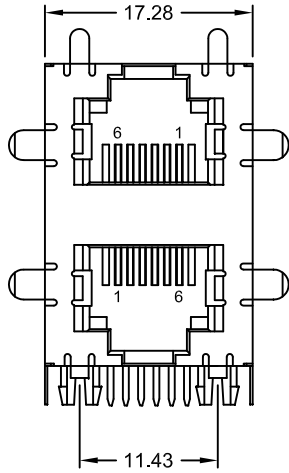
PART NUMBER	GOLD PLATING CONTACT AREA
MJS-2T66-S1L0-96/CCS	6μ"
MJS-2T66-S1L0-97/CCS	15μ"
MJS-2T66-S1L0-98/CCS	30μ"
MJS-2T66-S1L0-9H/CCS	50μ"



UNIT mm	GENERAL TOLERANCE		DRAWN Ronny	DATE 29.04.2014	DWG. NO. 3331300	SHEET 1/1	
	X.° ± 3°	X. ±				REV. A	
	SCALE Free	.X° ±	.X0 ± 0.38	CHECK Hogi	DATE 29.04.2014	SERIES NO.	
		.XX° ±	.XX ± 0.25	APPROVE Hogi	DATE 29.04.2014	MJS-2T66-S1L0-9x/CCS	
	XXX. ±	.XXX ±					

**STACKED GANG JACK**  
 RJ 12 (1x2) <6P6C>  
 fully shielded without gnd latches

REV.	DESCRIPTION	DATE	DRAWN
A	NEW	29.04.2014	Ronny



**Specifications**  
**Electrical**

Current rating: 1.5A  
 Insulation resistance: 1000MΩ min. @500V DC  
 Voltage rating: 125V AC rms  
 Withstanding voltage: 1000V AC rms 60Hz, 1 Minute  
 Contact resistance: 50mΩ max.

**Mechanical Requirements**

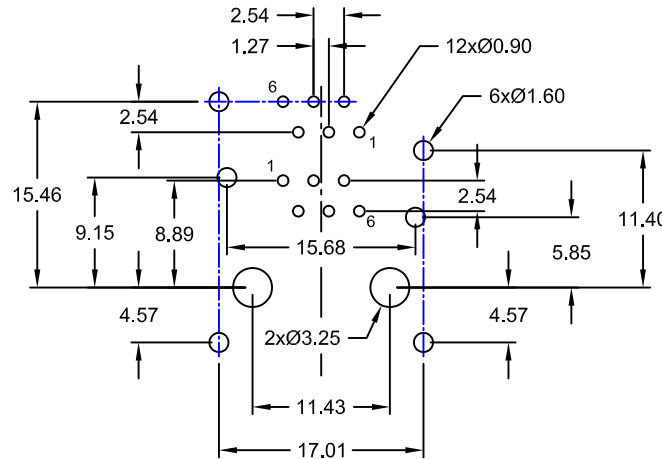
Operating Life: 750 Cycles min.

**Material**

Contact: Phosphor Bronze t=0.35mm  
 Plating: Sn over Ni on solder area;  
 Au over Ni on contact area  
 Insulator: PBT Polyester UL 94V-0 (Black)  
 Shield: stainless steel t=0.20mm

Storage temperature: -40°C to +85°C  
 Operating temperature: 0°C to +70°C

Cavity conforms to FCC Rules and Registration PAR68, Subparts F



Recommended PCB Layout  
(Top View)

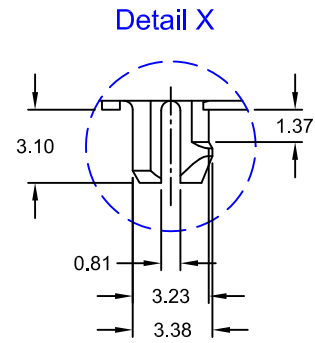
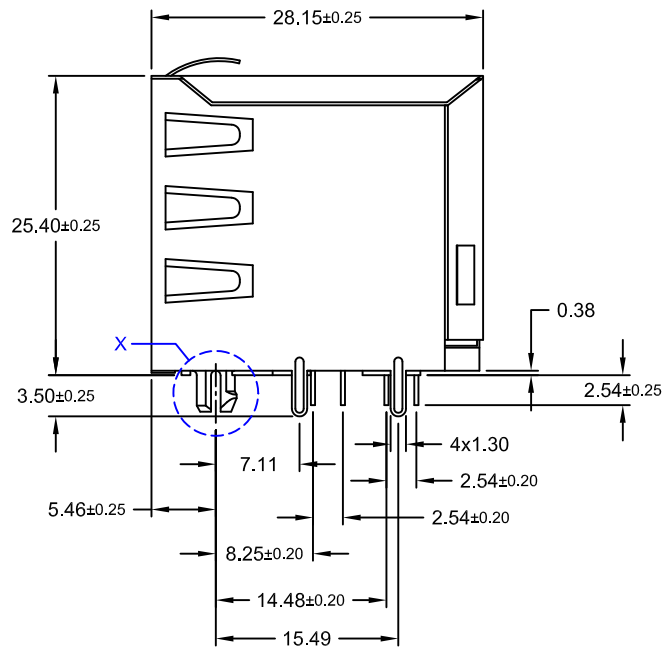
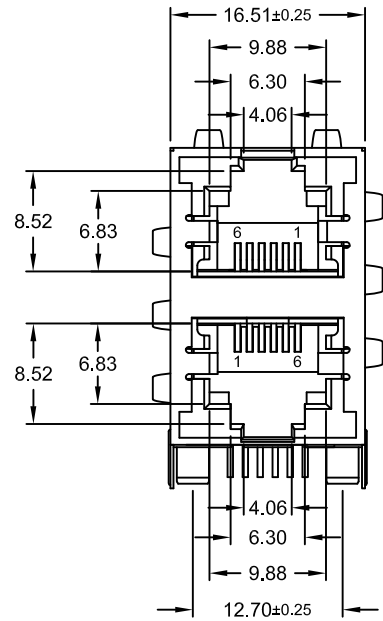
PART NUMBER	GOLD PLATING CONTACT AREA
MJS-2T66-S1L0-96/CCA	6μ"
MJS-2T66-S1L0-97/CCA	15μ"
MJS-2T66-S1L0-98/CCA	30μ"
MJS-2T66-S1L0-9H/CCA	50μ"

UNIT mm	GENERAL TOLERANCE		DRAWN Ronny	DATE 29.04.2014	DWG. NO. 3331301	SHEET 1/1
	X.° ± 3°	X. ±				
	SCALE Free	.X° ±	.X0 ± 0.38	CHECK Hogi	DATE 29.04.2014	REV. A
		.XX° ±	.XX ± 0.25	APPROVE Hogi	DATE 29.04.2014	SERIES NO. MJS-2T66-S1L0-9x/CCA
	XXX. ±	.XXX ±				

**STACKED GANG JACK**  
 RJ 12 (1x2) <6P6C>  
 fully shielded  
 with gnd. latches around



REV.	DESCRIPTION	DATE	DRAWN
A	NEW	20.10.2015	Ronny



**Specifications**

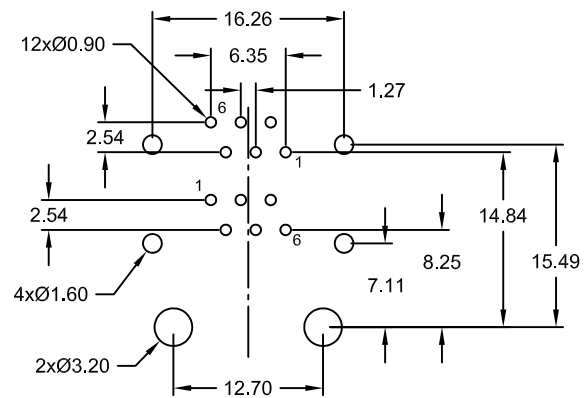
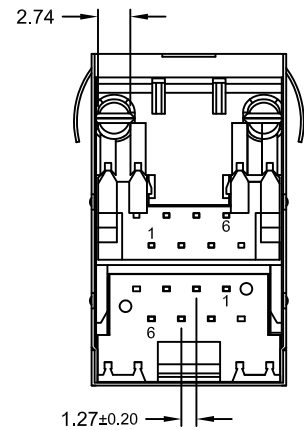
**Electrical**  
 Current rating: 1.5A  
 Insulation resistance: 1000MΩ min. @500C DC  
 Voltage rating: 125V AC max. rms  
 Withstanding voltage: 1000V AC rms 60Hz, 1Minute  
 Contact resistance: 50mΩ max.

**Material**  
 Contact: Phosphor Bronze  
 Plating: Au flash on solder area and Au 6μ" on contact area, Ni 50μ" min. underplated  
 Shield: steel, Ni plated  
 Insulator: PA46 (black) UL 94V-0

Storage temperature: -40°C to +85°C  
 Operating temperature: 0°C to +70°C

**Mechanical Requirements**  
 Operating Life: 750 cycles min.

Cavity comply with FCC Rules and Regulations Part 68, Subpart F



Recommended PCB Layout Top View (Tolerance ±0.05)

PART NUMBER	GOLD PLATING CONTACT AREA
MJS-2T66-S3L0-56/BCA	6μ"

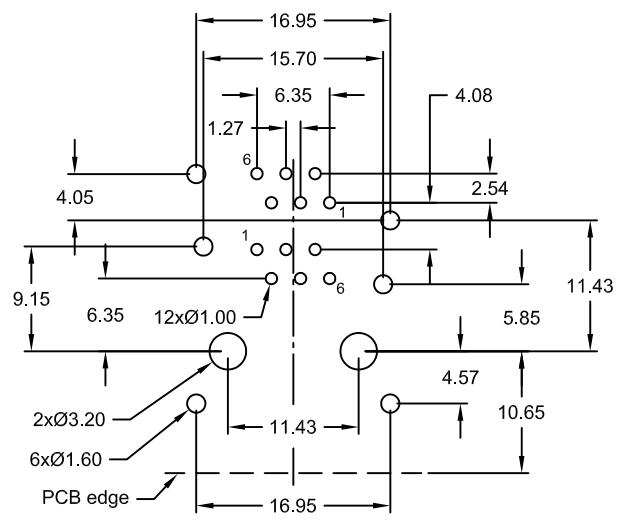
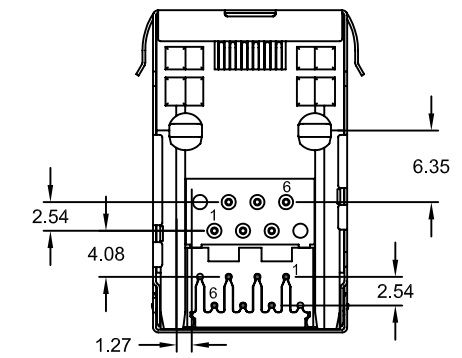
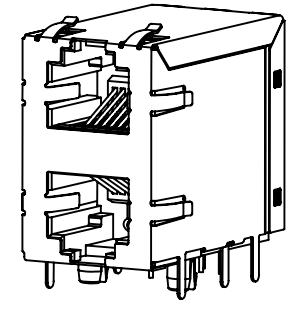
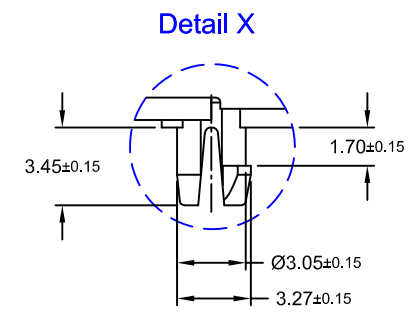
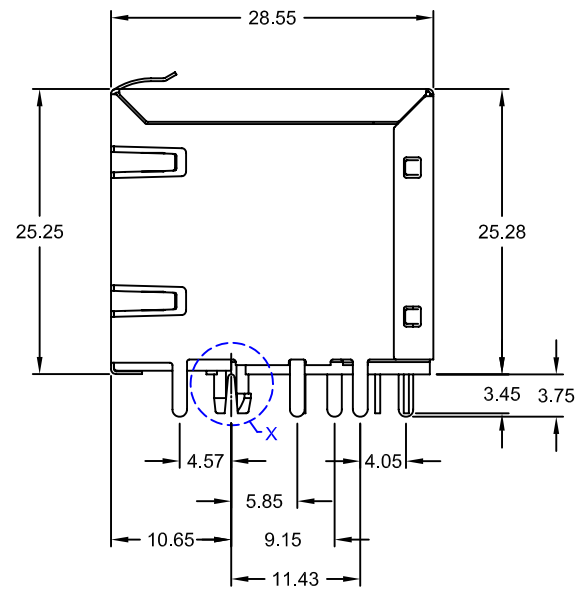
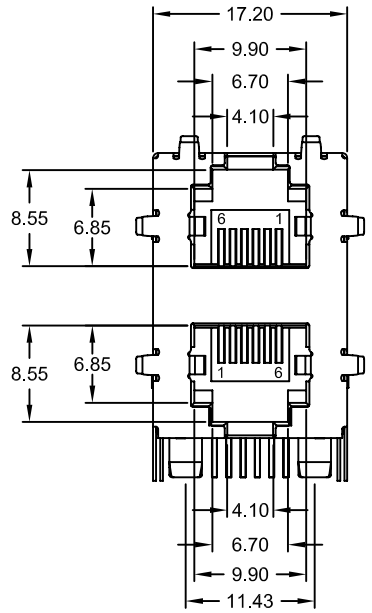
E-tec 2015 © - all rights reserved



UNIT mm	GENERAL TOLERANCE		DRAWN Ronny	DATE 20.10.2015	DWG. NO. 3331302	SHEET 1/1				
	SCALE Free	X° ±					X. ±	CHECK Hogi	DATE 20.10.2015	REV. A
		.XX° ±					.XX ± 0.13			
		XXX. ±					.XXX ±			
			APPROVE Hogi	DATE 20.10.2015	SERIES NO. MJS-2T66-S3L0-xx/BCA					

**STACKED GANG JACK**  
 RJ 12 (1x2) <6P6C>  
 fully shielded with gnd latches

REV.	DESCRIPTION	DATE	DRAWN
A	NEW	26.10.2015	Ronny



Recommended PCB Layout Top View  
(Tolerance ±0.05)

**Specifications**

**Electrical**

- Current rating: 1.5A
- Insulation resistance: 500MΩ min.
- Voltage rating: 125V AC max. rms
- Withstanding voltage: 1000V AC 1Minute
- Contact resistance: 30mΩ max.

**Material**

- Contact: Copper Alloy Dia = 0.45mm
- Plating: Sn over Ni on solder area; Au over Ni on contact area
- Shield: Copper Alloy, Ni plated
- Insulator: BPT (black) UL 94V-0

Operating temperature: 40°C to +105°C

Cavity comply with FCC Rules and Regulations Part 68, Subpart F

PART NUMBER	GOLD PLATING CONTACT AREA
MJS-2T66-S0L0-55/DCA	3μ"
MJS-2T66-S0L0-56/DCA	6μ"
MJS-2T66-S0L0-57/DCA	15μ"
MJS-2T66-S0L0-58/DCA	30μ"
MJS-2T66-S0L0-5H/DCA	50μ"

E-tec 2015 © - all rights reserved



UNIT mm	GENERAL TOLERANCE		DRAWN	DATE	DWG. NO.	SHEET 1/1
	X.° ±	X. ±	Ronny	26.10.2015	3331303	REV. A
	.X° ±	.X0 ±	CHECK	DATE		
	.XX° ±	.XX ± 0.25	Hogi	26.10.2015		
SCALE Free	XXX. ±	.XXX ±	APPROVE	DATE	SERIES NO.	
			Hogi	26.10.2015	MJS-2T66-S0L0-xx/DCA	

**STACKED GANG JACK**  
RJ 12 (1x2) <6P6C>  
fully shielded with gnd latches