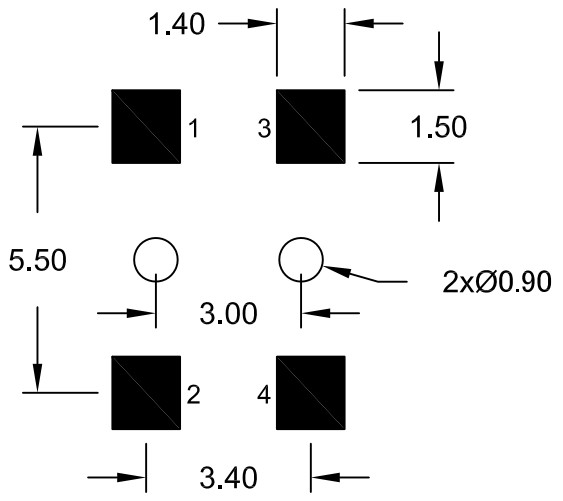
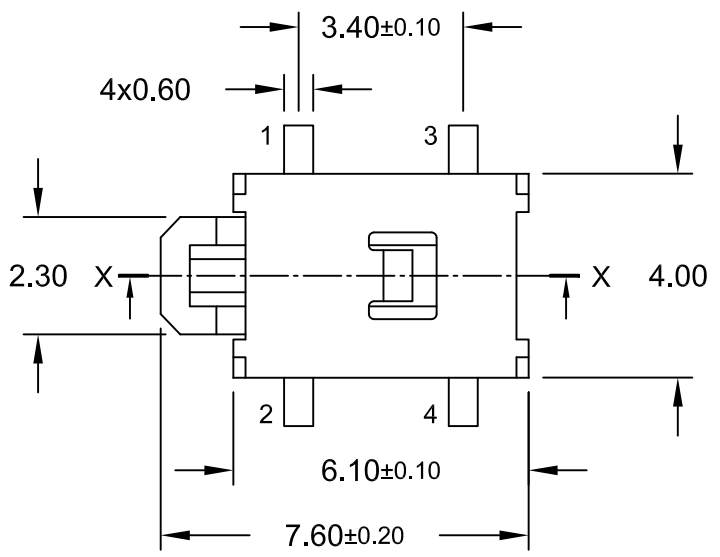
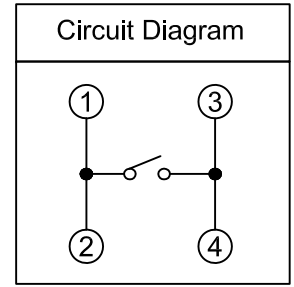


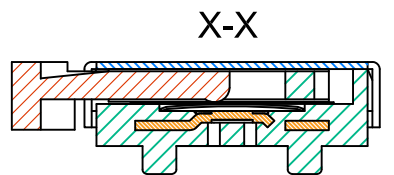
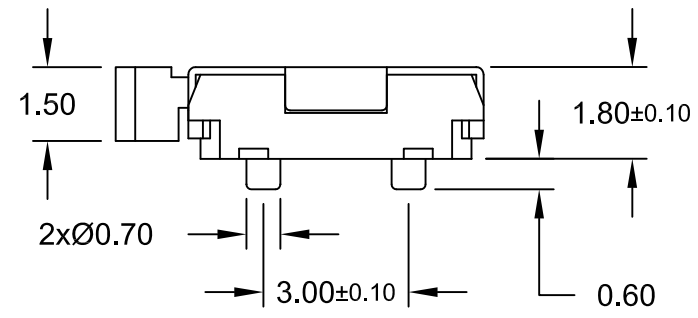
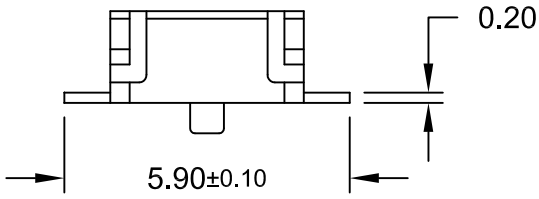
REV.	DESCRIPTION	DATE	DRAWN
A	New	25.02.2019	Cherry



Recommended PCB Layout "Top View"
(Tolerance ±0.05)



Order Code
TSM-6/4-R620BLC/6SZ



Specifications

Electrical

Current rating: 50mA @12V DC
 Insulation resistance: 100MΩ min.
 Contact resistance: 100mΩ max.
 Withstanding voltage: 250V AC / Minute

Mechanical Requirements

Operating force: 250gf ±50gf (2.45N ±0.50N)
 Operating life: 50.000 cycles min.

Material

Housing: LCP (white) UL 94-V0
 Stem: LCP (black) UL 94V-0
 Contact: SUS301; Silver plated
 Terminal: Phosphor Bronze; Silver plated
 Cover: SUS304
 Tape: Polyimide

Operating temperature: -20°C to +70°C
 Storage temperature: -40°C to +85°C

Packing Reel

E-tec 2019 © - all rights reserved



UNIT mm	GENERAL TOLERANCE		DRAWN Cherry	DATE 25.02.2019	DWG. NO. TSM-6/4-R620BLC/6	SHEET 1/1
	X.° ±	X. ±				
	.X° ±	.X ±				
	.XX° ±	.XX ± 0.30				
SCALE Free	.XXX° ±	.XXX ±	CHECK Hogi	DATE 25.02.2019	SERIES NO. TSM-6/4-R620BLC/6SZ	REV. A
			APPROVE Hogi	DATE 25.02.2019		

Tactile Switch SMT 6.1x4
Horizontal Type

