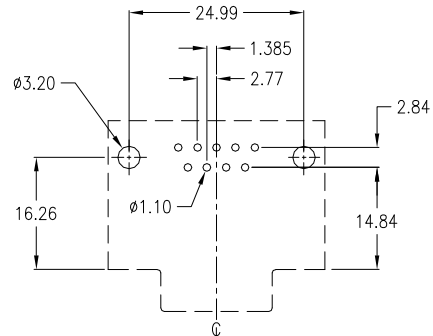
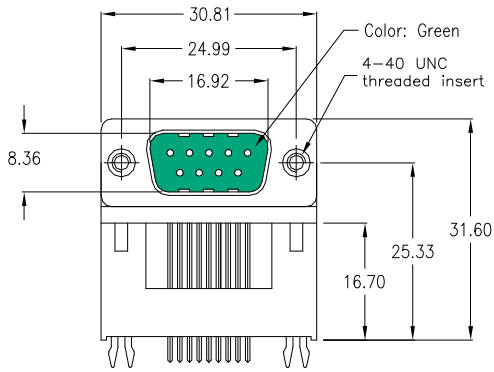
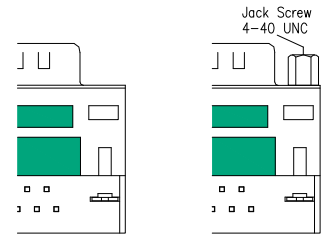
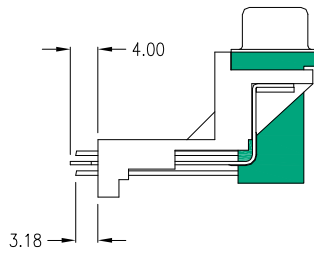
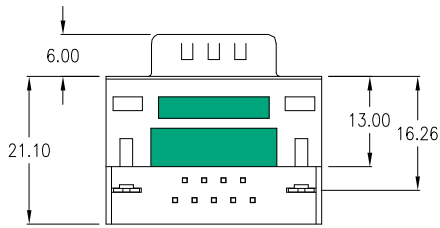


9-pin male raised



PCB hole layout



Style "-MN"

Style "-MNJ"

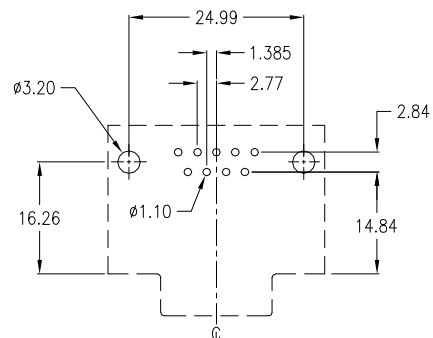
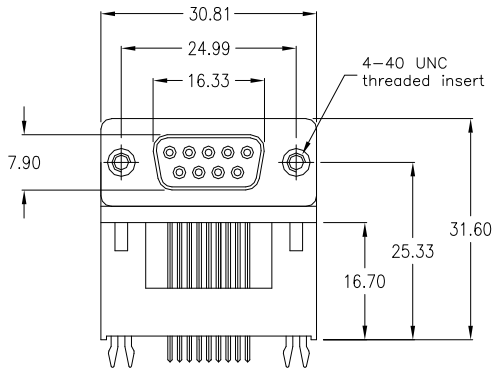
with 2 grounding clips;
w/o jack screws
Standard
(as above drawing)

with 2 grounding clips;
2 jack screws 4-40 UNC
mounted
Option

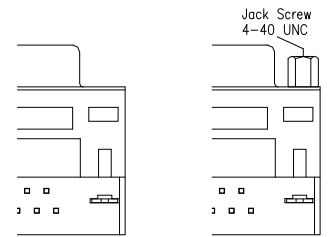
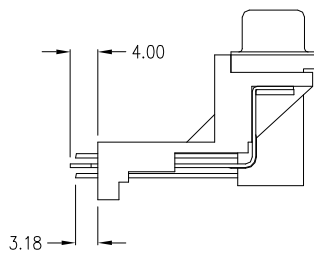
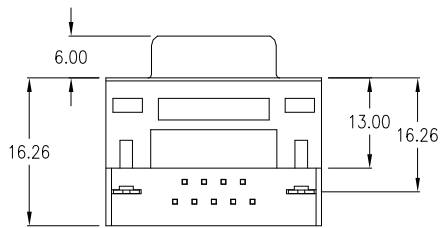
SDD-0900-2-95-MN

SDD-0900-2-95-MNJ

9-pin female raised



PCB hole layout



Style "-FN"

Style "-FNJ"

with 2 grounding clips;
w/o jack screws
Standard
(as above drawing)

with 2 grounding clips;
2 jack screws 4-40 UNC
mounted
Option

SDD-0900-2-95-FN

SDD-0900-2-95-FNJ