

Ordering Code

JSR - xxx - X xxx - NN

thread combination		thread combi-code
inside	outside	
M 2,6	4-40 UNC	244
2-56 UNC	2-56 UNC	256
M 3	M 3	300
M 3	M 2,6	326
M 3	4-40 UNC	344
4-40 UNC	4-40 UNC	440
4-40 UNC	M 3	443

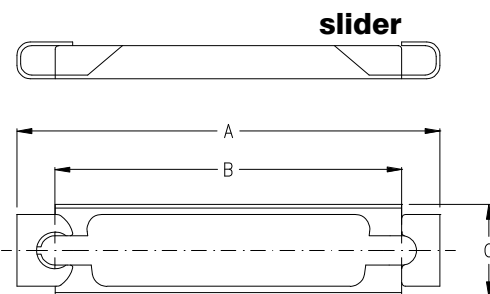
size type

T 600	
T 601	
T 602	standard type
T 603	
T 604	for „Low Profile“ D-Sub; Page 8 to 13
T 605	
T 607	for „press fit“ D-Sub; Page 30
T 609	
T 610	

If you order D-Sub connector assembled with Jack screw, T602 type always will be delivered.

Jack Screws with other dimension, also round head, are available on request.

Slide locking accessories



Ordering Code

SLO - xxx - T 106 - NN

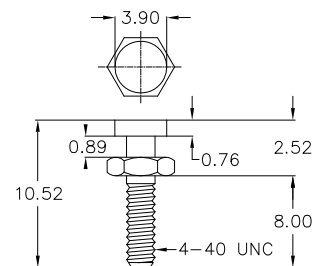
No. of contacts

009 - 015 - 025

other sizes on request

- A set of slider consists of:
- * 1 frame
 - * 2 screws 4-40 UNC
 - * 2 washers
 - * 2 nuts 4-40 UNC

locking post



Ordering Code

JLP - 440 - T 106 - NN

If you want to have assembled to the D-Sub connector direct, please ask the nearest E-tec office or Distributor

Jack Screws and Slide locking accessories are Nickel plated