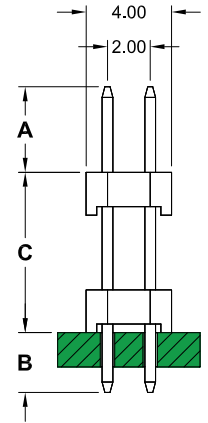
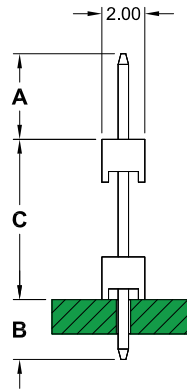
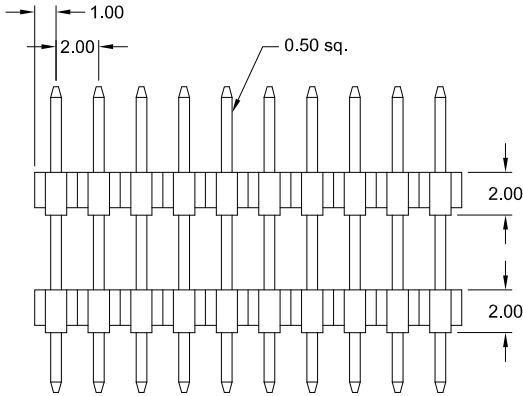
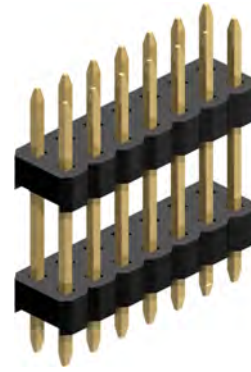
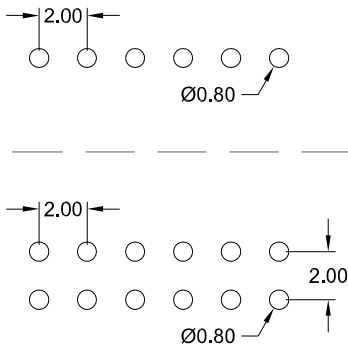


2.00mm pitch Board Spacer

- THT - single & dual row



PCB Hole Layout



Specifications

Current rating	2 A
Insulation resistance	1000 MΩ min.
Withstanding voltage	500 V AC
Operating temperature	- 40°C to +105°C
Contact material	Copper alloy <i>(RoHS compliant)</i>
Insulator material	PBT or PA6T, UL 94 V-0 <i>(RoHS compliant)</i> Standard : PBT

Pin code

DIM "A"

DIM "B"

DIM "C"

143/02	6.80 mm	2.80 mm	4.70 mm
104/01	2.70 mm	2.70 mm	5.00 mm
136/02	5.30 mm	3.20 mm	5.10 mm
191/01	9.30 mm	4.30 mm	5.50 mm
117/01	2.80 mm	2.80 mm	6.10 mm
143/01	4.00 mm	2.80 mm	7.50 mm
143/03	2.40 mm	3.90 mm	8.00 mm
150/01	4.00 mm	2.50 mm	8.50 mm
163/01	4.00 mm	2.80 mm	9.50 mm
180/03	5.00 mm	3.00 mm	10.00 mm
170/01	3.00 mm	3.00 mm	11.00 mm
180/02	3.00 mm	3.00 mm	12.00 mm
210/01	6.00 mm	3.00 mm	12.00 mm
260/04	9.00 mm	4.00 mm	13.00 mm
220/01	4.00 mm	2.80 mm	15.25 mm
252/02	5.20 mm	4.20 mm	15.80 mm
300/03	10.00 mm	3.00 mm	17.00 mm
225/01	2.50 mm	2.50 mm	17.50 mm
270/02	4.00 mm	3.00 mm	20.00 mm
410/01	9.00 mm	4.00 mm	28.00 mm
432/01	3.20 mm	3.20 mm	36.80 mm

other dimensions on request

How to order

SP x - xxx - X xxx/xx - 55/2

Rows	Nbr of pins	Insulator	Pin code	Plating
1 = single row	002 to 040	S = PBT N = PA6T <small>PA6T processing temp.: +250°C +0/-5°C for 5sec.</small>	dimension and others see above table	55 = Gold other platings on request
2 = dual row	004 to 080			