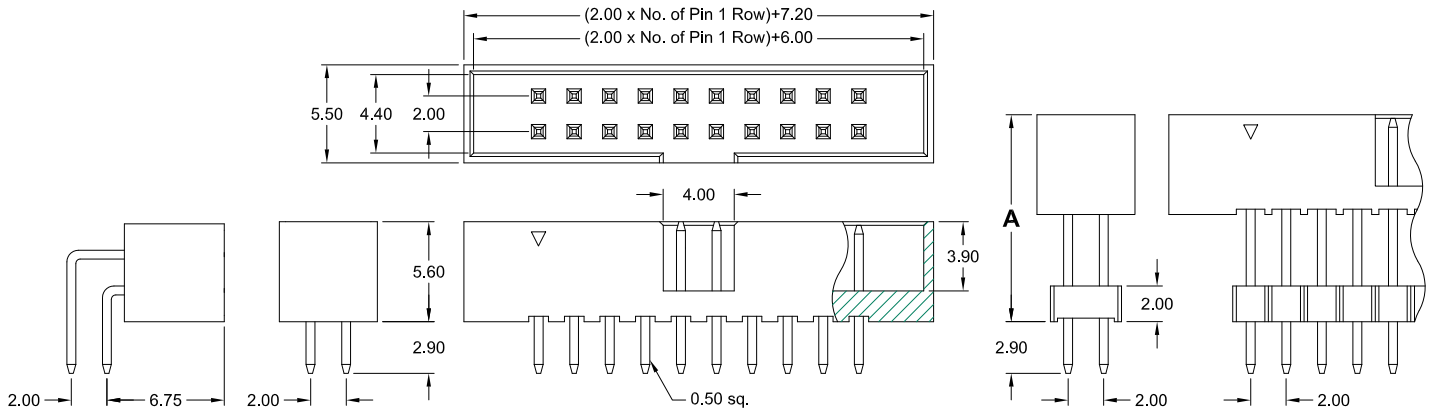
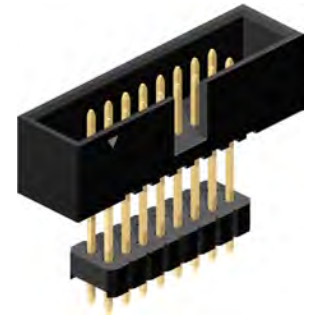
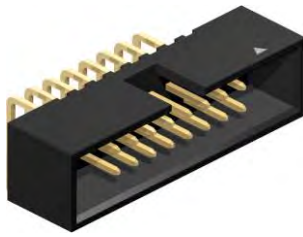


2.00mm pitch

Box Header

- THT - right angle - straight - raised



Style **R562**

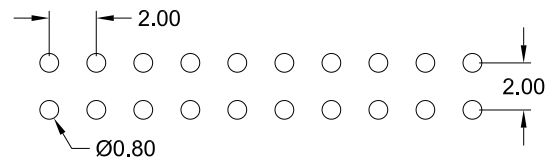
S562

D762/xx

Application and Features

- Designed to mate with IDC female connector IDS-xxx-X200-95/P
- Reliable flat cable to PCB connection
- No ejection latches for space saving

PCB Hole Layout



Specifications

Current rating	1 A	Operating temperature	- 40°C to +105°C
Insulation resistance	1000 MΩ min.	Contact material	(RoHS compliant) Copper alloy
Withstanding voltage	500 V AC	Insulator material	(RoHS compliant) PBT UL 94 V-0

How to order

SLS - xxx - Xxxx - 55/2

Nbr of pins
006 to 068
except: 038; 042; 046; 048; 052 054; 056; 058; 062; 066

Style
S562 = straight
R562 = right angle
Raised Style:
D762/00 DIM "A" = 7.60 mm
D762/01 DIM "A" = 17.80 mm
D762/02 DIM "A" = 10.40 mm
other dimensions on request

Plating
55 = Gold
other platings on request