

# DMD Series - SO - DIMM Sockets

## 200-pin for DDR Module

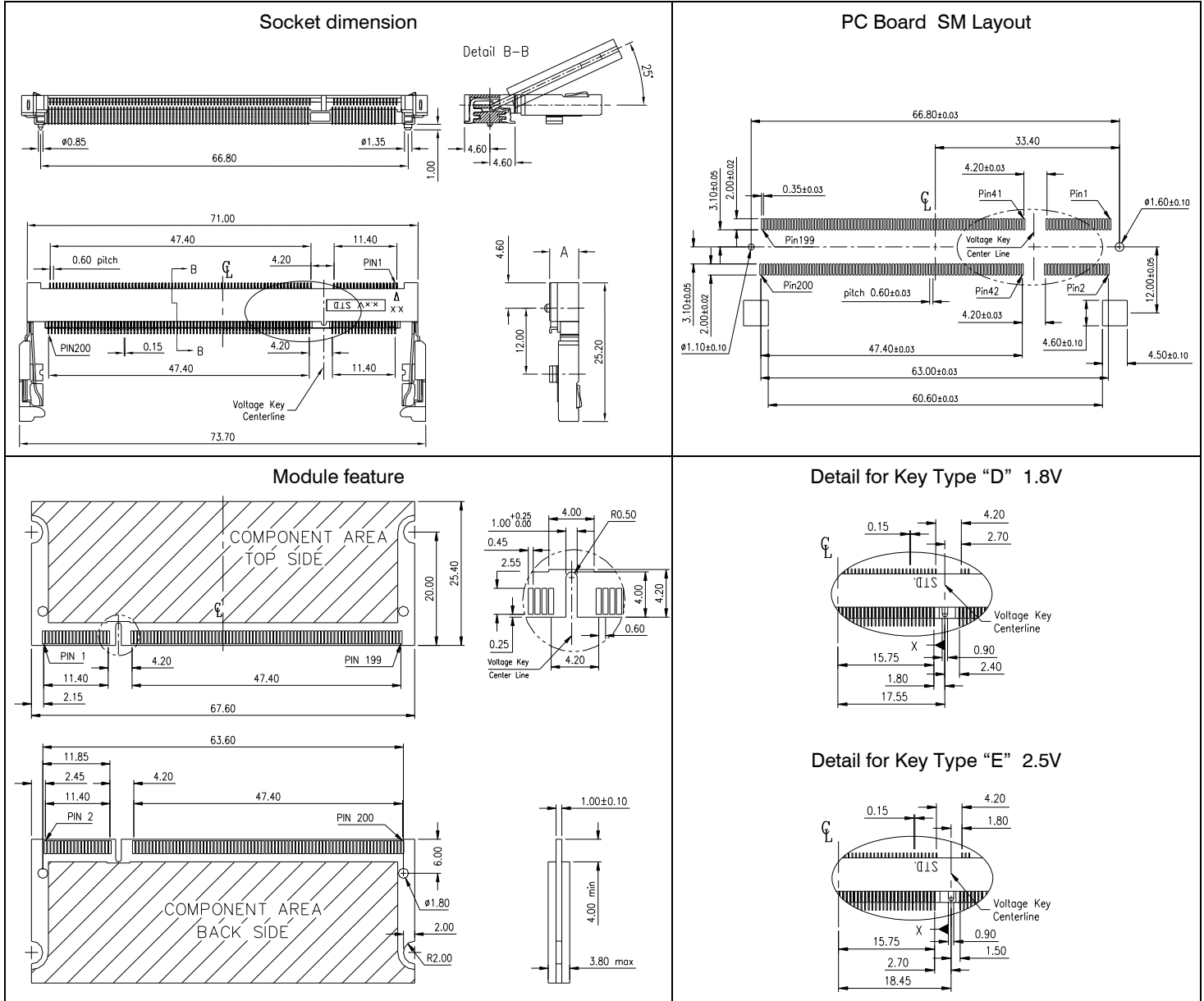
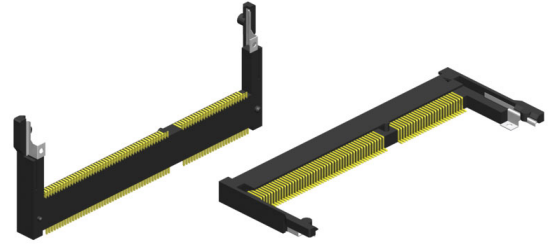


SO-DIMM sockets for **200-pin DDR Module** are made of hi-temp resistant LCP.

Insertion & extraction of the module can be made without any tools.

Positive polarization prevents wrong insertion of the module.

Contacts are designed with an anti-overstress feature for long contact life.



### Specification

|                        |  |           |  |
|------------------------|--|-----------|--|
| Current rating         | 0.5 A  | Insulator | (RoHS compliant) LCP <b>black</b> UL 94 V-0            |
| Voltage rating         | 50 V AC                                      |           | ivory on request                                       |
| Insulation resistance  | 500 MΩ min. (initial)<br>100 MΩ max. (final) | Contact   | (RoHS compliant) Phosphor bronze                       |
| Contact resistance     | 50 mΩ max.                                   | Plating   | (RoHS compliant) Au over Ni                            |
| Operating temperature  | -40°C to +80°C min.                          | Lifetime  | 25 cycles min.   |
| Processing temperature | +250°C +0/-5° for 20~40 Sec.                 | Latch     | (RoHS compliant) Stainless Steel, Sn (leadfree) plated |

| Pin     | SDRAM<br>"Standard" Socket Type | Connector<br>Dimension<br>"A" | Ordering Code                |                              |
|---------|---------------------------------|-------------------------------|------------------------------|------------------------------|
|         |                                 |                               | 1.8 Volt<br>Key Type "D"     | 2.5 Volt<br>Key Type "E"     |
| 200 pin | Standard-Profile                | 5.20 mm                       | <b>DMD - 200 - RSD9 - 55</b> | <b>DMD - 200 - RSE9 - 55</b> |

# DMD Series - SO - DIMM Socket

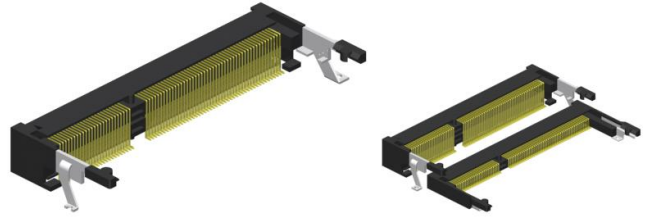
## 200-pin for DDR Module "9.20mm height"



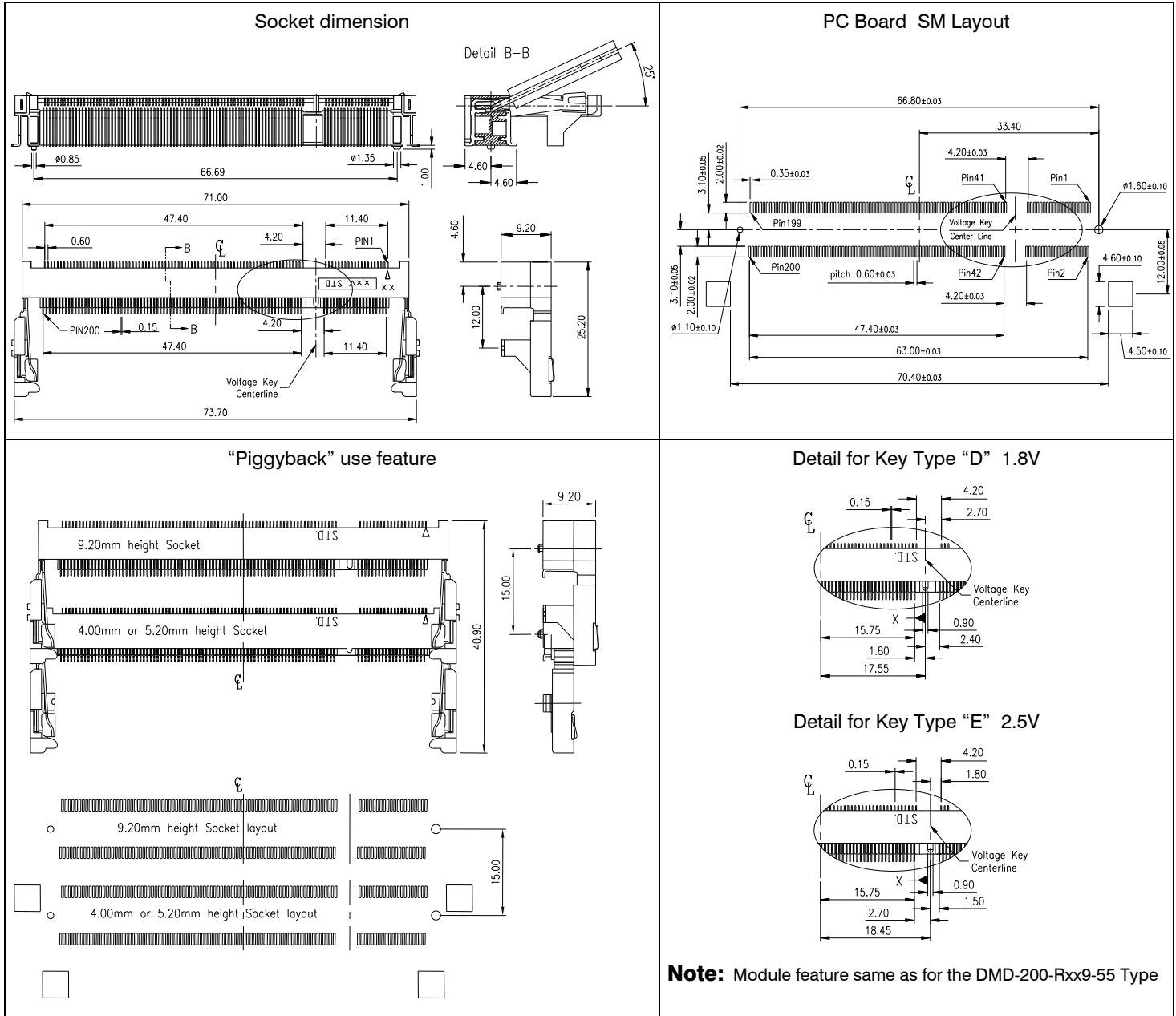
This **9.20mm height** SO-DIMM socket for 200-pin DDR Module, made of hi-temp resistant LCP, can be also used in combination with the 4.00mm & 5.20mm height type as **"Piggyback"**.

Insertion & extraction of the module can be made without any tool.  
Positive polarization prevents wrong insertion of the module.

Contacts are designed with an anti-overstress feature for long contact life.



Piggyback application



### Specification

|                        |  |           |  |
|------------------------|--|-----------|--|
| Current rating         | 0.5 A  | Insulator | (RoHS compliant) LCP <b>black</b> UL 94 V-0 ivory on request |
| Voltage rating         | 50 V AC                                      | Contact   | (RoHS compliant) Phosphor bronze                             |
| Insulation resistance  | 500 MΩ min. (initial)<br>100 MΩ max. (final) | Plating   | (RoHS compliant) Au over Ni                                  |
| Contact resistance     | 50 mΩ max.                                   | Lifetime  | 25 cycles min.   |
| Operating temperature  | -40°C to +80°C min.                          | Latch     | (RoHS compliant) Stainless Steel, Sn (leadfree) plated       |
| Processing temperature | +250°C +0/-5° for 20~40 Sec.                 |           |  |

| Pin     | SDRAM<br>"Standard" Socket Type | Connector<br>Dimension<br>"A" | Ordering Code                |                              |
|---------|---------------------------------|-------------------------------|------------------------------|------------------------------|
|         |                                 |                               | 1.8 Volt<br>Key Type "D"     | 2.5 Volt<br>Key Type "E"     |
| 200 pin | "Piggyback" - Type              | 9.20 mm                       | <b>DMD - 200 - RPD9 - 55</b> | <b>DMD - 200 - RPE9 - 55</b> |