

RF Connectors

SMA Series



SMA connectors with 50Ω impedance are high precision subminiature devices designed for microwave applications up to 18 GHz. These connectors are produced with brass or high quality stainless steel, which offer excellent durability and mechanical strength.

1/4-36UNS-2B

REFERENCE PLANE → E

Dimension	PLUG Millimeters	
	Minimum	Maximum
A	6.35	6.73
B	4.53	4.59
C	2.54	3.43
D	0.00	0.25
E	1.91	2.54
F	0.00	0.25
G	0.90	0.94
H	0.00	0.38
J	1.24	1.30

1/4-36UNS-2A

See NOTE

REFERENCE PLANE → C

Dimension	JACK Millimeters	
	Minimum	Maximum
A	5.28	5.49
B	4.60	4.67
C	1.88	1.98
D	0.00	0.25
E	0.38	1.14
F	2.92	--
G	0.00	0.25
H	4.32	--
J	1.24	1.30
K	5.54	--

NOTE
In order to meet the VSWR and CR values as specified, the inner hole diameter needs to be mated with a 0.9/0.94mm dia. pin.

How to order

RF X - SA X - XX X 5 xx - 58

Gender
P = Plug
J = Jack

Orientation
R = Right Angle
S = Straight

Mounting Type / Adaptor Type
B1 = THT Board Mount
B3 = END Launch Board Mount
C1 = Crimp Cable
P1 = Panel Board Mount
other types on request

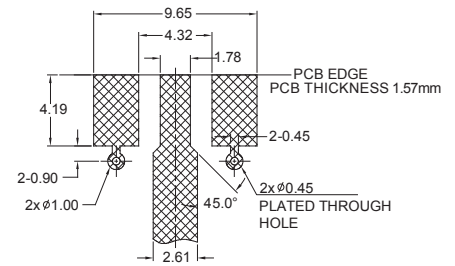
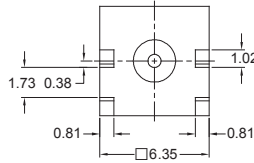
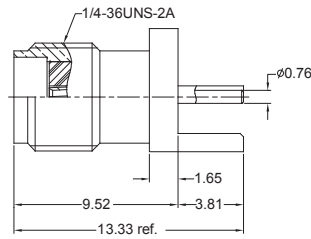
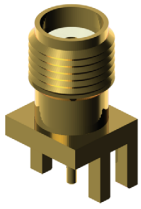
Detail
N = Not defined
L = End Launch
A = Bulkhead, Front Mount
others on request

Cable Group / Receptacle Type
Code allocated by E-tec

RF Connectors SMA Series



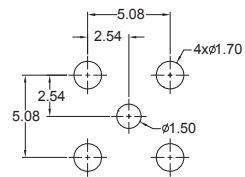
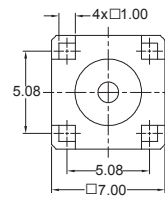
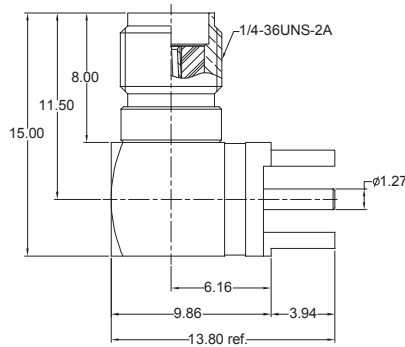
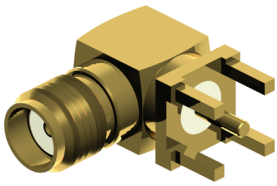
STRAIGHT END LAUNCH JACK



PCB surface Mount Layout

Order Code
RFJ-SAS-B3L592-58

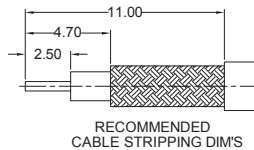
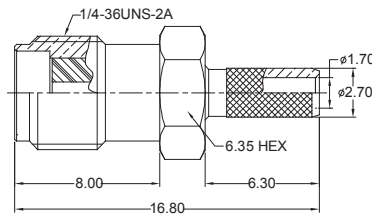
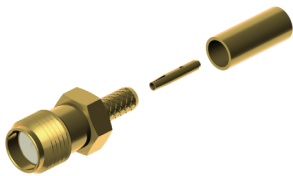
R/A THT JACK



PCB Hole Layout

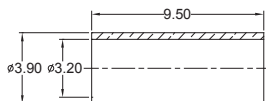
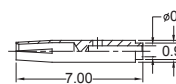
Order Code
RFJ-SAR-B1N592-58

CRIMP JACK



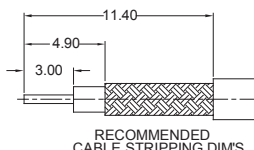
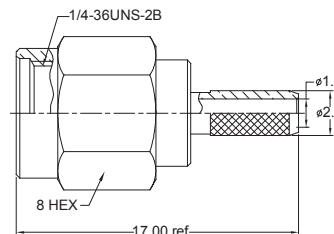
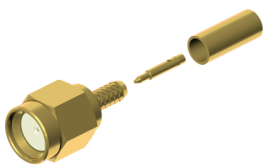
CABLE TYPES
RG-174/U, 188A/U, 316/U, LMR-100

RECOMMENDED
CABLE STRIPPING DIM'S



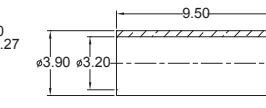
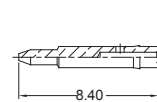
Order Code
RFJ-SAS-C1N502-58

CRIMP PLUG



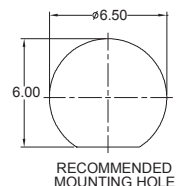
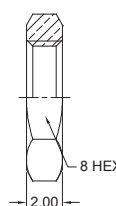
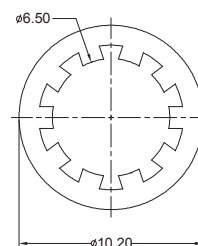
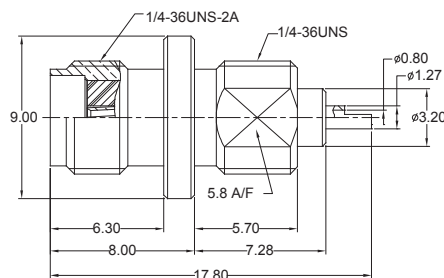
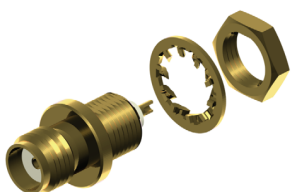
CABLE TYPES
RG-174/U, 188A/U, 316/U, LMR-100

RECOMMENDED
CABLE STRIPPING DIM'S



Order Code
RFP-SAS-C1N502-58

PANEL JACK



Order Code
RFJ-SAS-P1A591-58

Other SMA types available on request